

Park Center Apartment Homes



Parking Spaces: open

Pets Allowed: Under 25 lbs with a deposit

Large Bedrooms: 2 Bedroom
Available Now

Large Bathrooms: 1 and 2 Bathroom
Available Now

Large Open Floor Plans: Call For
Availability

Deposit: \$525 (\$300 refundable; \$225 non-refundable)

Minimum Lease: 6, 9, 12 month
leases available

Included Utilities: water, sewer,
garbage

3007 Borst Avenue
Centralia, WA 98531

Sherri W.
parkcenterapts@msn.com
360-807-1234

360-807-1234

Find your new apartment home at Centralia's premier apartment community, Park Center. Beautiful and well-maintained, 1 and 2 bedroom apartment homes in a very nice neighborhood. Easy, affordable living. Call us today!

Refrigerator, Dishwasher, Washer/Dryer, Wall to Wall Carpet, Patio, Balcony, Walk-In Closets, Stove, Extra Storage (On Patio or Balcony), Covered Parking, computer nook, Handicapped Accessible Units Available, Guest Parking, High-Speed Internet Available

Listing Website: <http://vflyer.us/dzcaga>

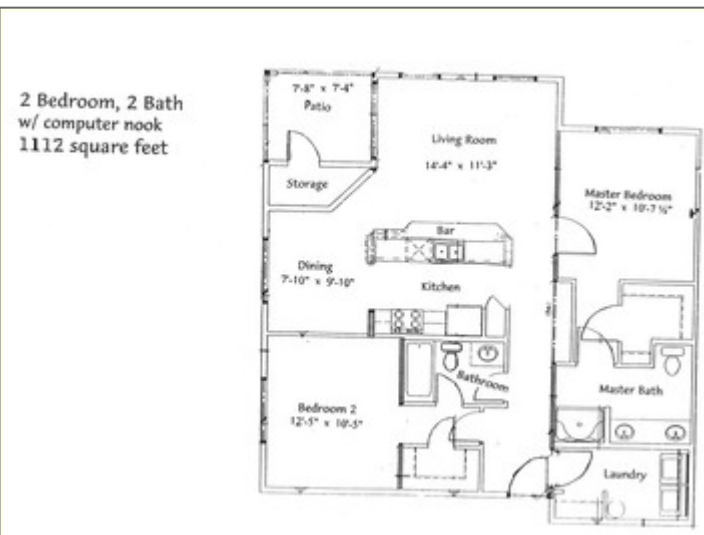
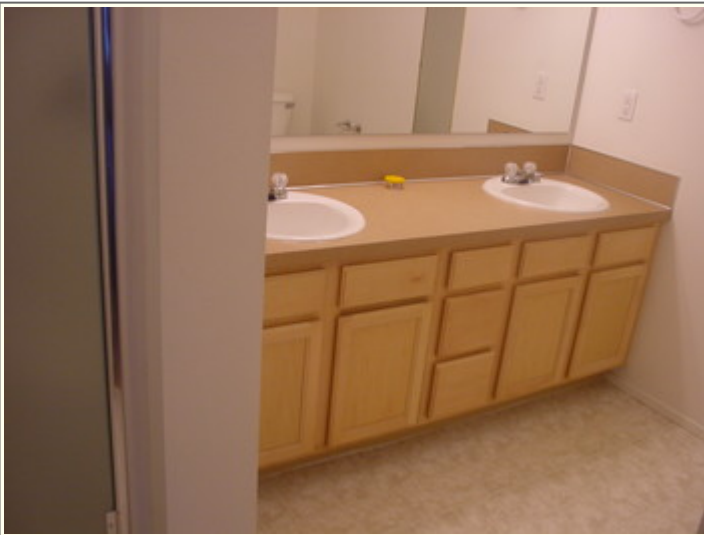
POWERED BY VFLYER.COM

 EQUAL HOUSING OPPORTUNITY

VFLYER ID: 2146288

All information in this site is deemed reliable but is not guaranteed and is subject to change

Photo Gallery



Sherri W. | 360-807-1234 | parkcenterapts@msn.com

All information in this site is deemed reliable but is not guaranteed and is subject to change