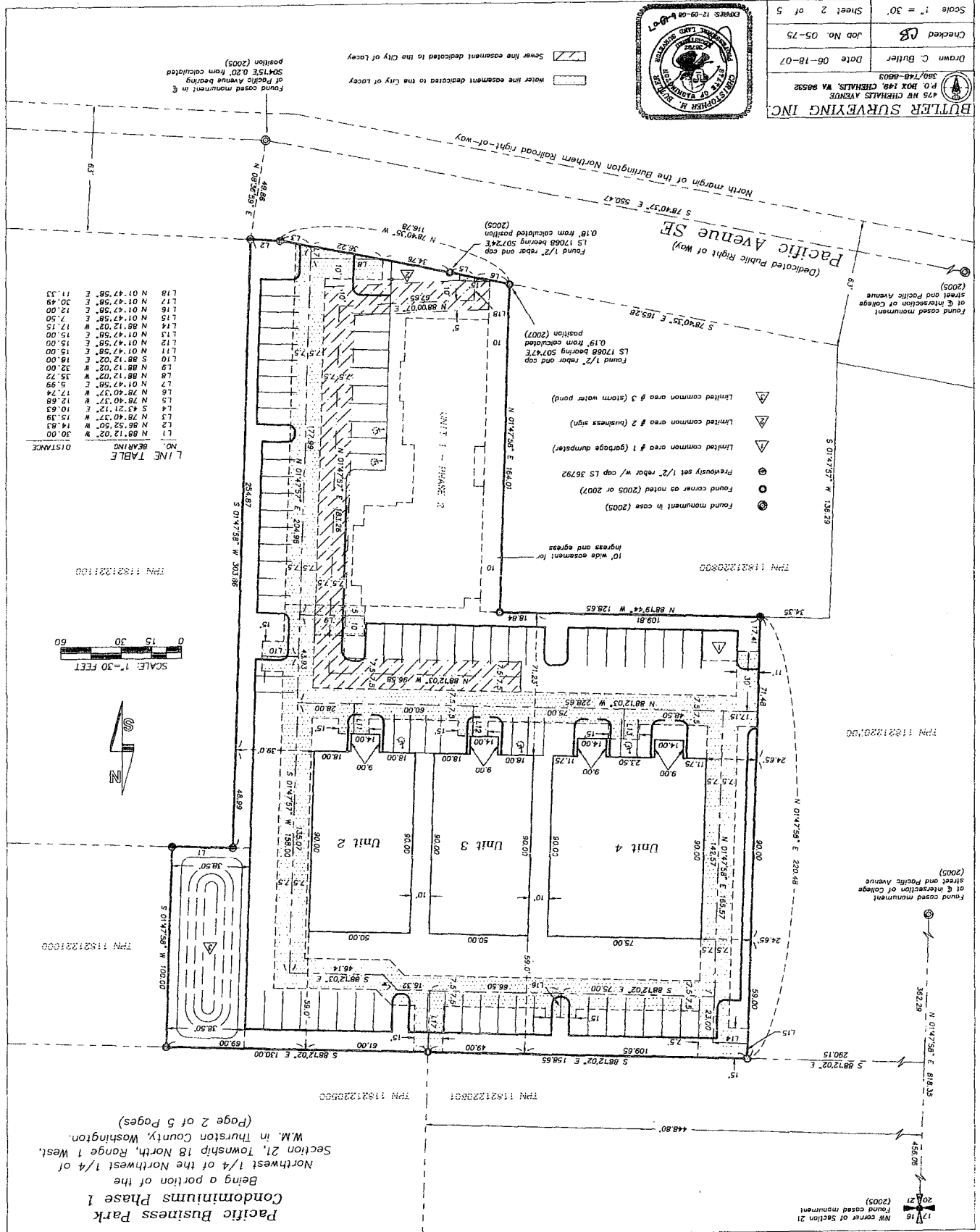


Condo # 3935902 2/5

Scale 1" = 30'	Sheet 2 of 5
Checked <i>CB</i>	Job No. 05-75
Drawn C. Butler	Date 06-18-07
476 NW CHEHALIS AVENUE P.O. BOX 148, CHEHALIS, WA 98529 360-748-8893 BUTLER SURVEYING INC.	

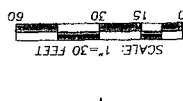


Water line easement dedicated to the City of Lacey
 Sewer line easement dedicated to the City of Lacey



LINE TABLE

NO.	BEARINGS	DISTANCE
L1	N 88°12'02\"	30.00
L2	N 86°52'50\"	14.63
L3	N 78°40'37\"	15.39
L4	S 43°21'12\"	10.63
L5	N 78°40'37\"	12.68
L6	N 01°47'58\"	17.24
L7	N 01°47'58\"	5.99
L8	N 88°12'02\"	35.72
L9	N 88°12'02\"	32.00
L10	S 88°12'02\"	18.00
L11	N 01°47'58\"	15.00
L12	N 01°47'58\"	15.00
L13	N 01°47'58\"	15.00
L14	N 88°12'02\"	17.15
L15	N 01°47'58\"	7.50
L16	N 01°47'58\"	12.00
L17	N 01°47'58\"	20.49
L18	N 01°47'58\"	11.33



Pacific Business Park 1
 Condominiums Phase 1
 Being a portion of the
 Northwest 1/4 of the Northwest 1/4 of
 Section 21, Township 18 North, Range 1 West,
 W.M. in Thurston County, Washington.
 (Page 2 of 5 Pages)

Condo # 3935902 2/5